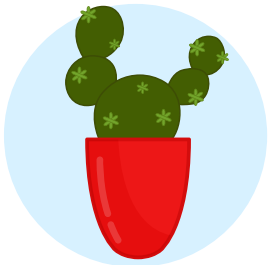


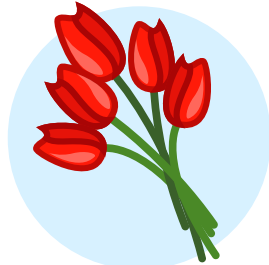
Senses



touch



taste



smell



sight



hearing

Your tongue tastes different flavours.



sweet



sour



salty



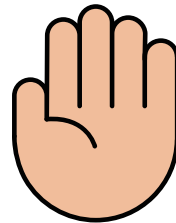
bitter

Body parts

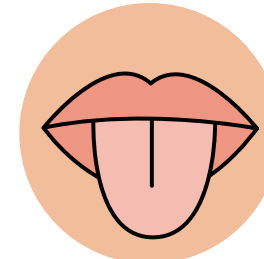
- | | | |
|-------|------|--------|
| ears | nose | elbows |
| eyes | feet | legs |
| hair | head | knees |
| mouth | neck | face |
| teeth | arms | hands |



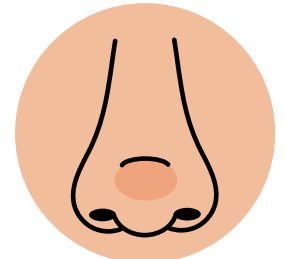
Sensing body parts



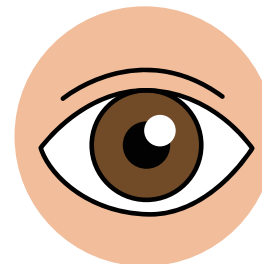
skin



tongue



nose



eye



ear

Animal groups

mammals



- Fur or hair.
- Drink milk from their mothers.
- Give birth to live young.

birds



- Two wings and two legs.
- Beak and feathers.
- Lay eggs.

reptiles



- Dry, scaly skin.
- Breathe with lungs.
- Lay eggs.

amphibians



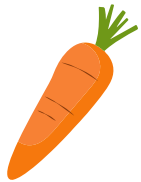
- Moist skin.
- Live on land and water.
- Lay eggs.

fish



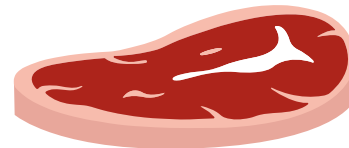
- Scales.
- Gills.
- Lay eggs.

herbivores



eat plants

omnivores



eat plants and animals

carnivores



eat animals

Animal body parts

beak

shell

fin

tail

horn

trunk

paws

wings

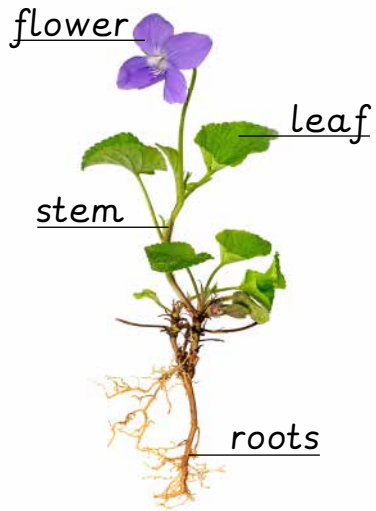
gills

claws

whiskers

snout

Plant parts











plant	A living thing that stays in one place and makes its own food from sunlight.
roots	The part of a plant that grows underground.
stem	The part of a plant that grows above ground and keeps the plant upright.
leaf	The green parts of a plant that grow from stems or branches.
flower	The colourful part of a plant where seeds are made.

Deciduous trees



- Leaves:
- Change colour.
 - Fall in winter.
 - Are wide and flat.

Wild plants	Garden plants	Deciduous trees	Evergreen trees
 dandelion	 lily	 horse chestnut	 holly
 daisy	 rose	 oak	 pine

Evergreen trees



- Leaves:
- Always green.
 - Tough and waxy.
 - Are narrow and needle-like.

Materials



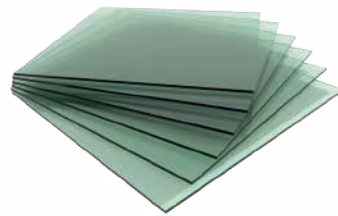
wood



plastic



metal



glass



rock



water

Materials have different properties.

- | | | |
|----------|--------|--------|
| hard | bendy | heavy |
| soft | rough | light |
| stretchy | fluffy | shiny |
| stiff | cold | strong |
| smooth | sharp | fuzzy |



waterproof

Stops water getting through.



absorbent

Soaks up and holds on to water.



transparent

See-through.